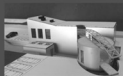
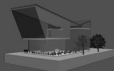


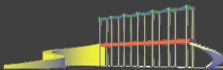
Youssef Zouki Portfolio 2013



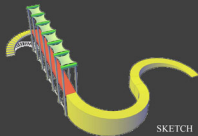
AUTOCAD SKETCHES	2006 - 2007	ARC 222 - ARC 322
PAINTER'S WORKSHOP	2007 - 2008	ARC 202
MUSEUM OF A PAINTER	2007 - 2008	ARC 202
TEMPORARY ACCOMODATION	2008 - 2009	ARC 301
POLYCLINICS	2008 - 2009	ARC 301
MUNICIPALITY UNION	2008 - 2009	ARC 302 - ARC 361
HOUSING PROJECT	2009 - 2010	ARC 401
MINISTRY OF CULTURE	2009 - 2010	ARC 402
HOUSE RESTORATION	2010 - 2011	RCH 640
HOTEL AND SHOPS	2010 - 2011	ARC 501
MUNICIPALITY	2010 - 2011	ARC 502
DIPLOMA PROJECT	2011 - 2012	ARC 601 - ARC 602
HAZMIYEH PARK	JUNE 2013	FREELANCE



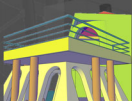
AUTOCAD SKETCHS (1ST & 2ND YEAR)



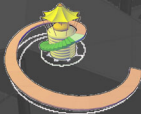
SKETCH



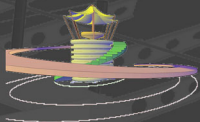
SKETCH



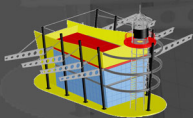
SKETCH



SKETCH



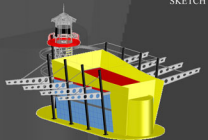
SKETCH



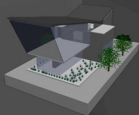
SKETCH



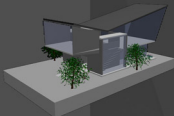
SKETCH



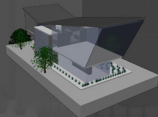
SKETCH



PERSPECTIVE VIEWS



PERSPECTIVE VIEWS



PERSPECTIVE VIEWS



SOUTH ELEVATION

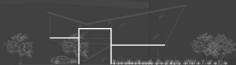


NORTH ELEVATION



PERSPECTIVE VIEW

- Painter's Workshop (2nd year project):
 With a land area of 185 m² and a 35 m²
 for each floor built surface that includes
- Ground Floor : Reception area,
 Waiting area,
 Exhibition room,
 Painter's office.
 - First Floor : Archive,
 Library,
 Relaxation are,
 Workshop.
 - Parking : 2 cars.



WEST ELEVATION



SECTION A-A



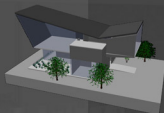
SECTION B-B



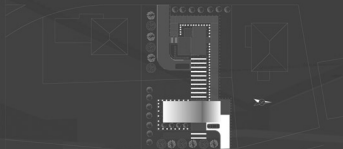
PERSPECTIVE VIEWS



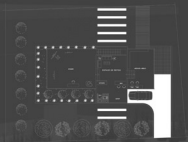
PERSPECTIVE VIEWS



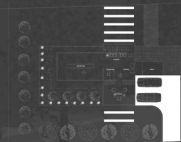
PERSPECTIVE VIEWS



MASS PLAN



FIRST FLOOR PLAN



GROUND FLOOR PLAN

PAINTER'S WORKSHOP 2007-2008

MUSEUM OF A PAINTER 2007-2008



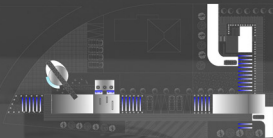
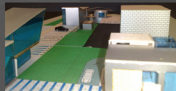
MODEL PICTURE



MODEL PICTURE



MODEL PICTURE



MASS PLAN

Museum Of a Painter (2nd year project)

With a land area of 450 m2 and a 70 m2 for each floor builted surface that includes

- Basement One : Sales Office, Waiting area, Temporary Exhibition, Permanent Exhibition, Auction Hall, Administration.
- Ground Floor : Reception Area, Temporary Exhibition.
- Parking : 12 cars.



PERSPECTIVE VIEWS



SECTION B-B



SECTION A-A



SECTION B-B

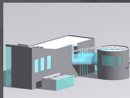


BASEMENT FLOOR PLAN

MUSEUM OF A PAINTER 2007-2008



PERSPECTIVE VIEWS



PERSPECTIVE VIEWS



NORTH ELEVATION



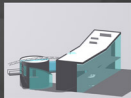
SOUTH ELEVATION



WEST ELEVATION



EAST ELEVATION



PERSPECTIVE VIEWS

TEMPORARY ACCOMMODATION 2008-2009 ARC 301

TEMPORARY ACCOMMODATION 2008-2009



EAST ELEVATION VIEW



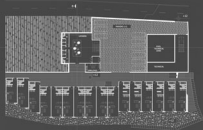
WEST ELEVATION VIEW

Temporary Accommodation (3rd year project):

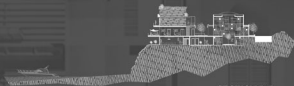
This project is located at JBEIL(Byblos), the lot area is about 2125 m2 with a 680 m2 constructed area

The building includes:

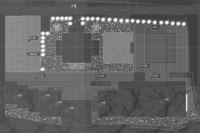
30 single flats, underground parking for 10 cars, lockers for visitors, showers, technical area, administration and auditing offices, external pool, reception area, external parking for 10 cars, kids play area.



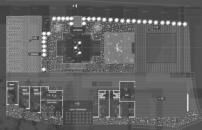
B1 PART PLAN



SECTION B-B



MASS PLAN



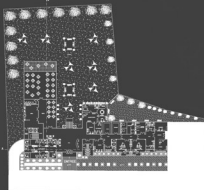
GF PART PLAN

POLYCLINICS 2008-2009
ARC 301

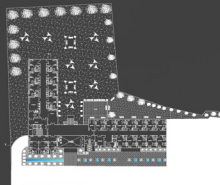
POLYCLINICS 2008-2009



PERSPECTIVE VIEWS



GROUND FLOOR PLAN



FIRST FLOOR PLAN



WEST ELEVATION



EAST ELEVATION



NORTH ELEVATION

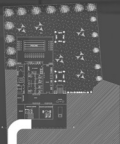


SOUTH ELEVATION



MASS PLAN

- POLYCLINICS (3rd year project):**
With a land area of 6745 m2 and a 1640 m2 for each floor built surface that includes
- Basement one : Rehabilitation & spa center.
 - Ground Floor : Reception area, Administration, Emergency area that includes operation area with all services needed, External clinics, Restaurant.
 - First Floor : 11 patients suites, 12 regular patients room.
 - Parking : 40 cars.



BASEMENT PLAN



SECTION

MUNICIPALITY UNION 2008-2009

ARC 302 - ARC 361

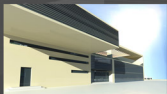
MUNICIPALITY UNION 2008-2009



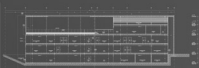
PERSPECTIVE VIEWS



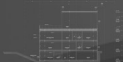
PERSPECTIVE VIEWS



PERSPECTIVE VIEWS



SECTION A-A



SECTION B-B



MASS PLAN



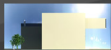
GROUND FLOOR PLAN



SOUTH ELEVATION



WEST ELEVATION



EAST ELEVATION

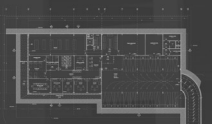


NORTH ELEVATION

MUNICIPALITY UNION (3rd year project):

This project is located at north Beirut, the lot area is about 3445 m² with a 900 m² constructed area. The building includes:

- Basement one : Police Department, Municipalities Archive, Parking for 18 cars.
- Ground Floor : Public health & Engineering Department, Reception area, Cafeteria Outdoor Parking for 52 cars.
- First Floor : Administration & Auditing Department, Multipurpose Room.
- Second Floor : International Visitors Apartments with an extension of 500 m² Garden



BASEMENT FLOOR PLAN



PERSPECTIVE VIEWS



PERSPECTIVE VIEWS



FLAT TYPICAL PLAN



ELEVATION TYPE 3



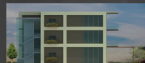
ELEVATION TYPE 4



ELEVATION TYPE 1



ELEVATION TYPE 2

DUPLEX TYPICAL PLAN
GROUND FLOOR PLANDUPLEX TYPICAL PLAN
FIRST FLOOR PLAN**Housing Project (4th year project):**

This project is located at East Beirut, the lot area is about 11 350 m2 with a 8500 m2 constructed area. Each building includes:

- Basement one : Parking for 5 cars, wine cellar for each apartment, technical area.
- Ground Floor : - For Duplex : Reception area, Dining room, 2 saloons, Guest master bedroom, Kitchen, maid room, wc.
 - For Flats : Reception area, dining room, saloon, 2 bedrooms, master bedroom living room.
- First Floor : - For Duplex : 3 master bedrooms, living room

HOUSING PROJECT 2009-2010



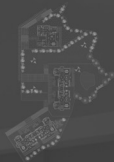
PERSPECTIVE VIEW



PERSPECTIVE VIEW



PERSPECTIVE VIEW



GROUND FLOOR PART PLAN



ELEVATION TYPE 5



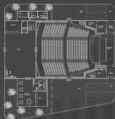
ELEVATION TYPE 6



MASS PLAN



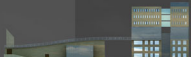
PERSPECTIVE VIEW



GF PART PLAN



MEZZANINE PART PLAN



WEST ELEVATION



EAST ELEVATION



MASS PLAN

Ministry Of Culture (4th year project):

This project is located at Beirut, the lot area is about 4400 m2 with a 2160 m2 constructed area. The building includes:

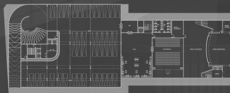
- Basement two : Parking for 42 cars, workshop, service area, Actors' hall, makeup, changing rooms.
- Basement one : Praking for 42 cars, hall, auditorium, technical and orchestra's area.
- Ground Floor : Police office, shop, cafeteria, theatre, hall.
- 1st To 7th Floor : Employees offices, Multipurpose room, Library, archives and all other services.
- Roof Top : Technical area.



SOUTH ELEVATION



NORTH ELEVATION



B1 FLOOR PLAN



7th FLOOR PART PLAN



PERSPECTIVE VIEW



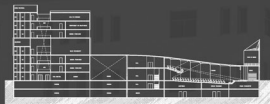
PERSPECTIVE VIEW



PERSPECTIVE VIEW



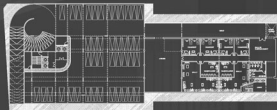
PERSPECTIVE VIEW



SECTION A-A



PERSPECTIVE VIEW



BASEMENT TWO FLOOR PLAN



PERSPECTIVE VIEW



PERSPECTIVE VIEW



PERSPECTIVE VIEW



DETAILS (RCH 640)



DETAILS (RCH 640)



DETAILS (RCH 640)

DETAILS

House Restoration (5th year project):

This course is based on the knowledge we must acquire in order to restore a traditional house.

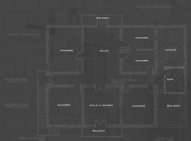
- The first phase is based on how to make an architectural drawing for an existing house.
- The second phase begins by determining the defects of this old house.
- The third phase is to give the solutions possible to restore this house.



FIRST FLOOR PLAN



FIRST FLOOR PLAN



FIRST FLOOR PLAN

HOUSE RESTORATION 2010-2011



PERSPECTIVE VIEW



PERSPECTIVE VIEW



PERSPECTIVE VIEW



DETAILS



SIDE ELEVATION



MAIN ELEVATION



INTERIOR VIEW

HOTEL AND SHOPS 2010-2011

ARC 501

1/2

HOTEL AND SHOPS 2010-2011



PERSPECTIVE VIEW



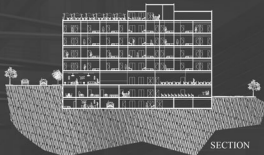
PERSPECTIVE VIEW



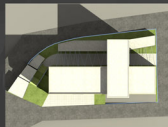
PERSPECTIVE VIEW



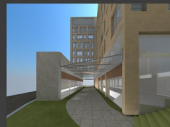
SOUTH ELEVATION



SECTION



MASS PLAN



PERSPECTIVE VIEW



EAST ELEVATION

Hotel and Shops (5th year project):

This project is located at Beit(BYBLOS), the lot area is about 1600 m2 with a 350 m2 constructed area. The building includes:

- Basement one : Parking for 25 cars, restaurant kitchen, technical area
- Ground Floor : Administration & Auditing, conference room, external shops
- First Floor : Restaurant, Piano bar, Lobby
- 2nd to 6th Floor (Typical floor) 5 two beds bedrooms, 5 one bed bedrooms, 2 dormitory.
- Roof Top : Restaurant with an external terrace.

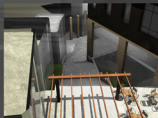
HOTEL AND SHOPS 2010-2011



PERSPECTIVE VIEW



PERSPECTIVE VIEW



PERSPECTIVE VIEW



TYPICAL FLOOR PLAN



WEST ELEVATION



NORTH ELEVATION

MUNICIPALITY 2010-2011 ARC 502

MUNICIPALITY 2010 - 2011



PERSPECTIVE VIEWS



PERSPECTIVE VIEWS



PERSPECTIVE VIEWS



BACK VIEW

Municipality (5th year project) :

This project is located at Mar Moussa village, the lot area is about 3100 m2 with a 560 m2 constructed area. The building includes:

- Basement three : Parking for 16 cars, Storage area.
- Basement two : Multipurpose room, Service area, hall, Fire-fighter and police offices and dormitory.
- Mezzanine : Waiting area and hall.
- Basement one : Clinics, Library, Waiting area, Archive room.
- Ground Floor : President office, Meeting room, Waiting room, offices.



NORTH-WEST ELEVATION



SOUTH-EAST ELEVATION



SECTION B-B



SIDE VIEW

MUNICIPALITY 2010-2011
ARC 502

MUNICIPALITY 2010 - 2011



SIDE VIEW



FRONT VIEW



SECTION A-A



PERSPECTIVE VIEWS



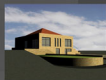
GF FLOOR PLAN



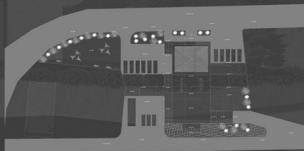
B1 FLOOR PLAN



B2 FLOOR PLAN



PERSPECTIVE VIEWS



MASS PLAN



OLD INHABITED BRIDGE



PICTURE OF THE BRIDGE



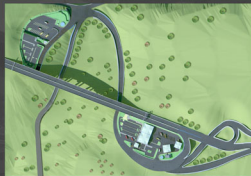
PERSPECTIVE VIEW



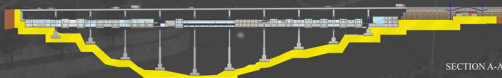
SITE LOCATION

Diploma Project (6th year project):

The MUZEIREJ bridge is the highest bridge in the middle east.
With a land area of 65 000 m² and a 30 000 m²
Parking / parking area and services.
Administration / offices area and maintenance.
Resting area.
Food and beverages (F & B).
Rooms services (laundry, wc...)
Disaster recovery area.
Shopping area (shops...)
Housing area.



MASS PLAN



SECTION A-A

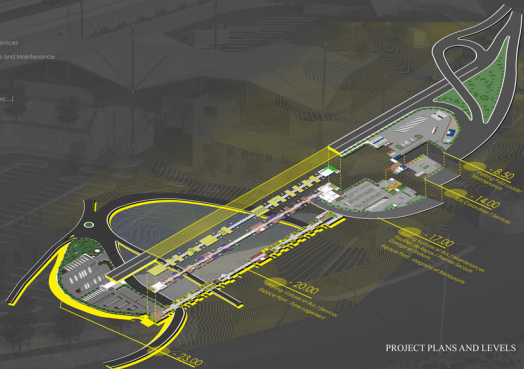


ELEVATION VIEW



ELEVATION VIEW

- Parking / Parking area & Services
- Administration / Offices area and Maintenance
- Resting Area
- Food & Beverage (F&B)
- Rooms Services (Laundry, wc...)
- Disaster Recovery Area
- Shopping Area (Shops...)
- Housing Area



PROJECT PLANS AND LEVELS



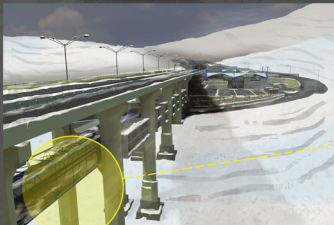
PERSPECTIVE VIEW



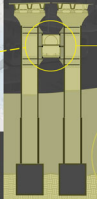
PERSPECTIVE VIEW



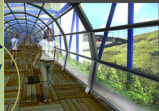
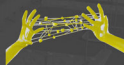
PERSPECTIVE VIEW



PERSPECTIVE VIEW



DETAILS



PERSPECTIVE VIEW



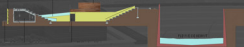
PERSPECTIVE VIEW



PERSPECTIVE VIEW



PERSPECTIVE VIEW



CONCEPTUAL SECTION

Hazmiyeh Park (Freelance)

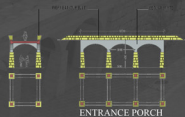
With a land area of 13000 m2 the municipality of hazmiyeh asked for :
Underground parking, external stadium, shops, football court, landscaping.



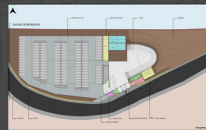
PERSPECTIVE VIEW



GROUND FLOOR PART PLAN



ENTRANCE PORCH



BASEMENT FLOOR PART PLAN



GROUND FLOOR PART PLAN