

portfolio  
**Eugenia Gotti**

INDEX

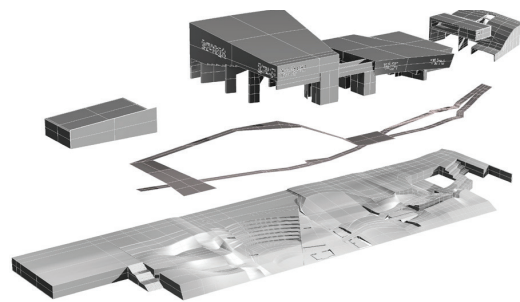
LOW UP	<b>2</b>	2010 - proposal
parCORMONS	<b>4</b>	2011 - proposal
WINERY	<b>6</b>	2012 - competition
ETEROTOPIE	<b>8</b>	2012 - reserch
WEBFIT	<b>10</b>	2012 - realized



Proposal  
**LOW UP**

Where: Belvedere Grado, UD Italy  
Function: University of taste  
Year: 2009  
Mq: 4000  
Designers: Eugenia Gotti, Enrico Mancini

The project is located on the gronda of Grado.  
We have proposed a scenario in which the earth  
becomes a cultivation of fruit trees of high quality.  
At the center, a research center with power points  
tasting and education classes.



explode

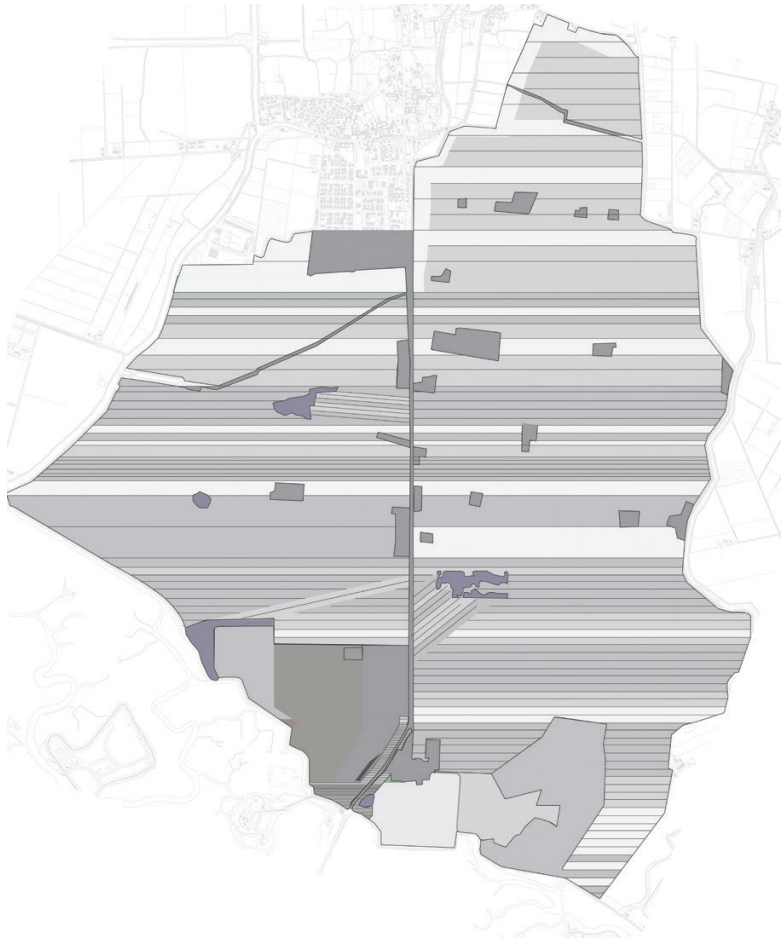
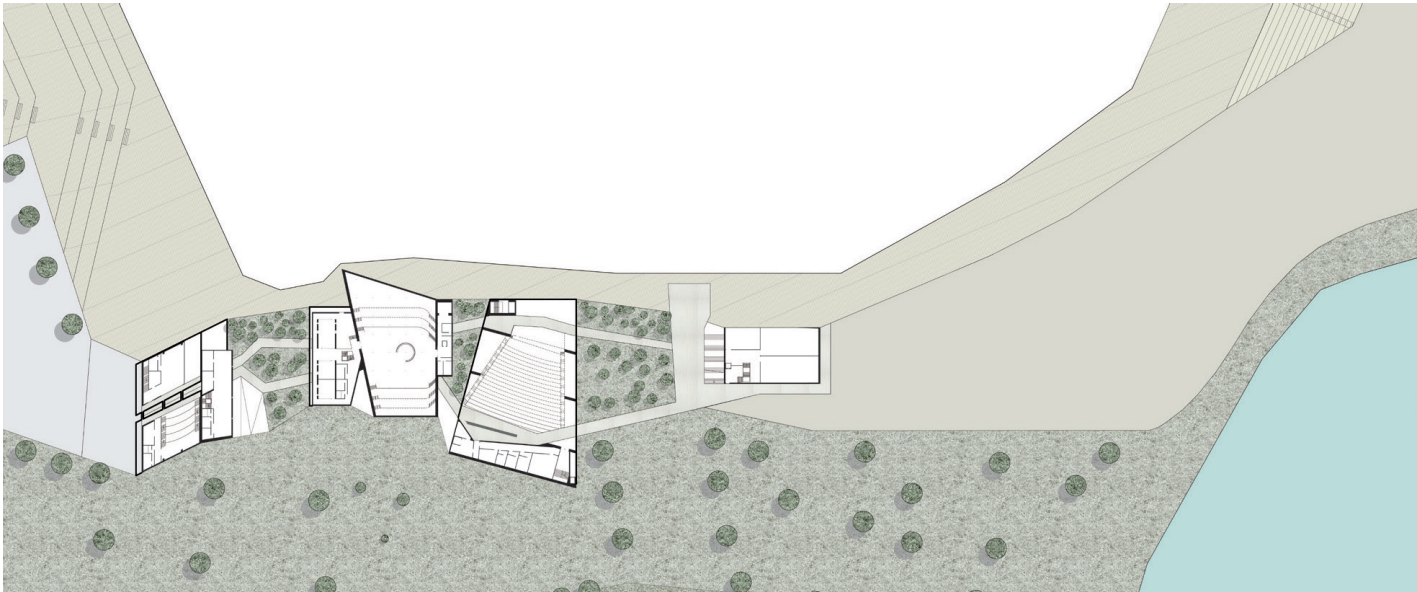


diagram area



section



1.500

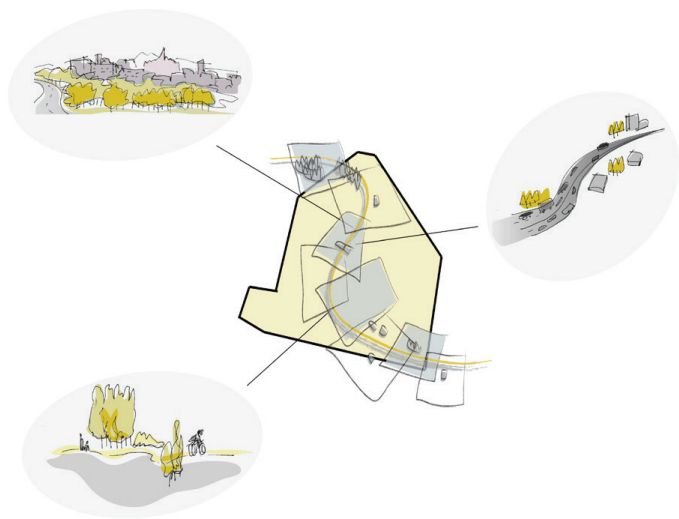




Proposal  
**PARCORMONS**

Where: Cormons, UD Italy  
Function: Public Park  
Year: 2009/2010  
Mq: 6000  
Designers: Eugenia Gotti, Sara Carciotti

The project is about a redevelopment of a ex-military zone. The area is divided in two by a strategic path that cross through it. On one side stood the high density residences and, on the other side, a park organized in rooms, utilizzabile by the entire popula- tion of Cormons.

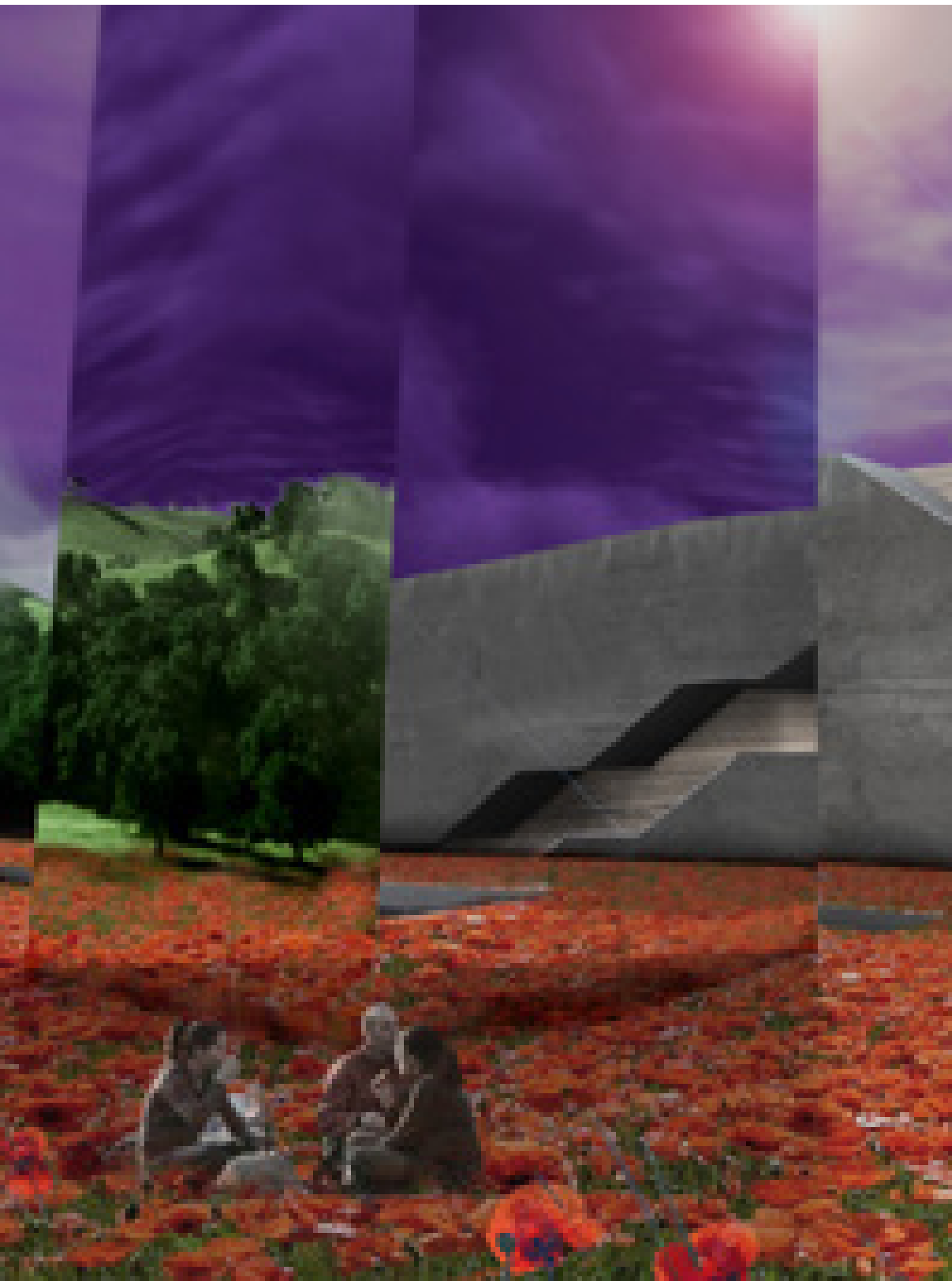
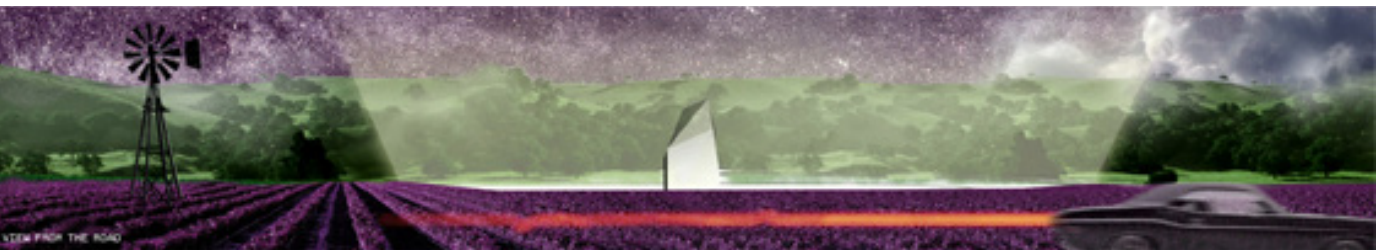
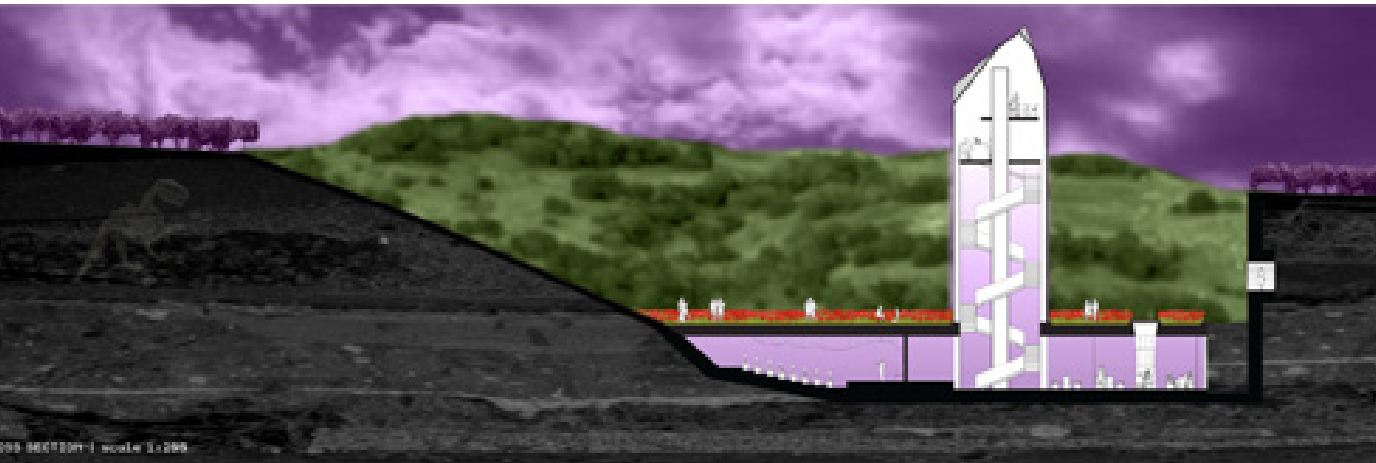
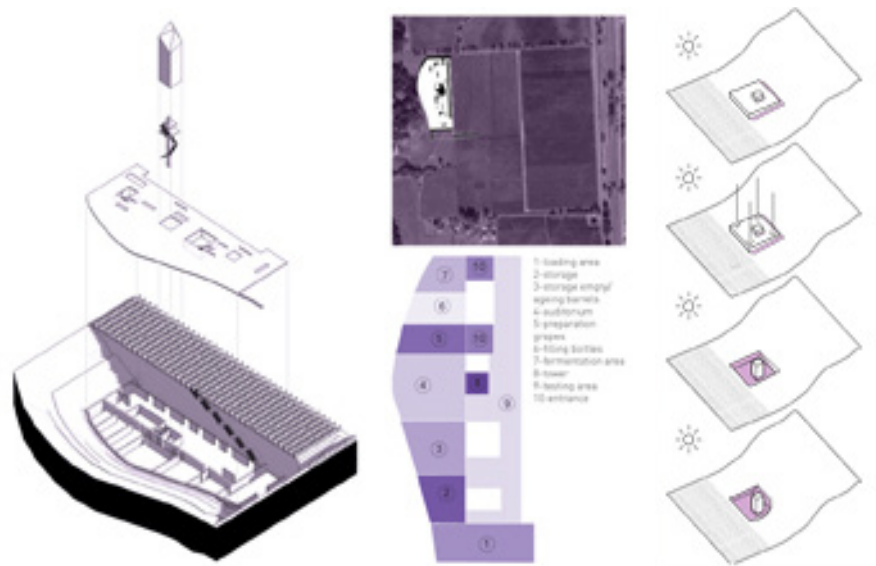




Competition  
**WINERY**

**zero40lab**  
where: Napa valley, California  
function: Vinery  
Year: 2012  
MQ: 1800  
Designers: Eugenia Gotti, Andrea Cester,  
Enrico Mancini, Marco Lutman, Lorenzo  
Pentasuglia

The idea of building “tower” was brought forward to the performance criteria for land use and compatibility with the systems of production and storage of wine and to call the archetypes fit into the local landscape.

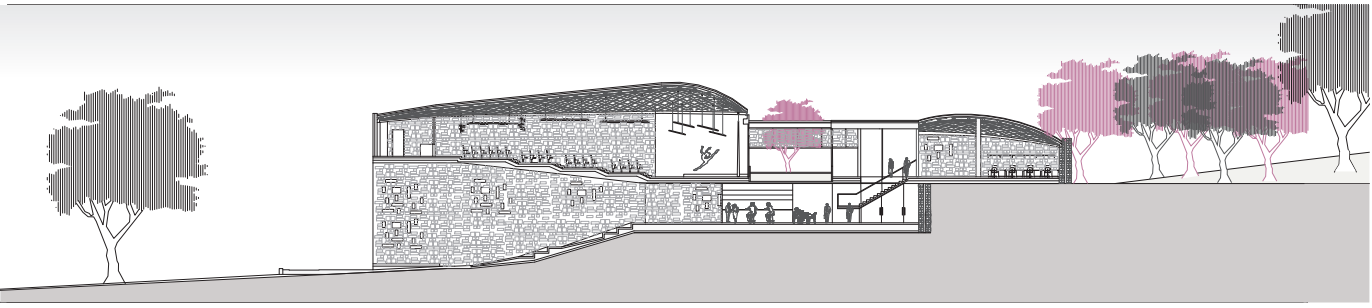
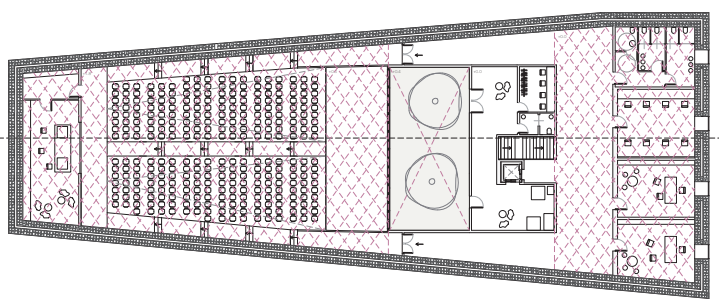
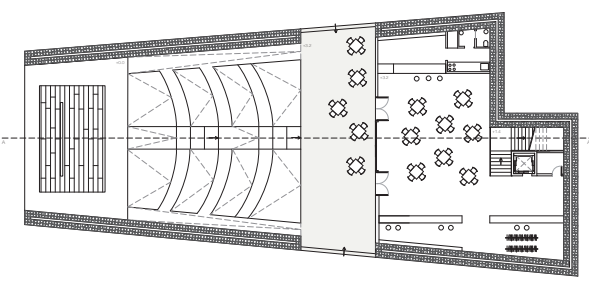
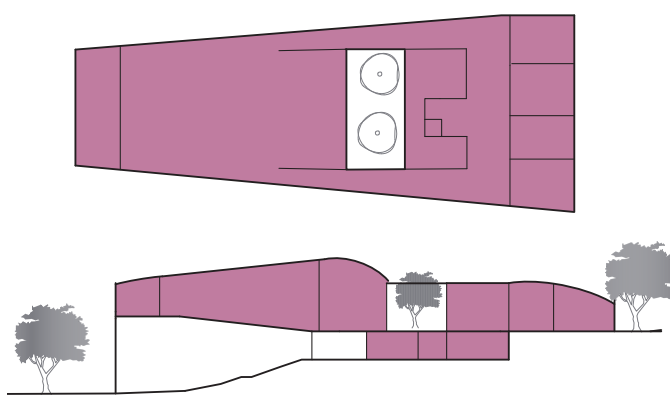
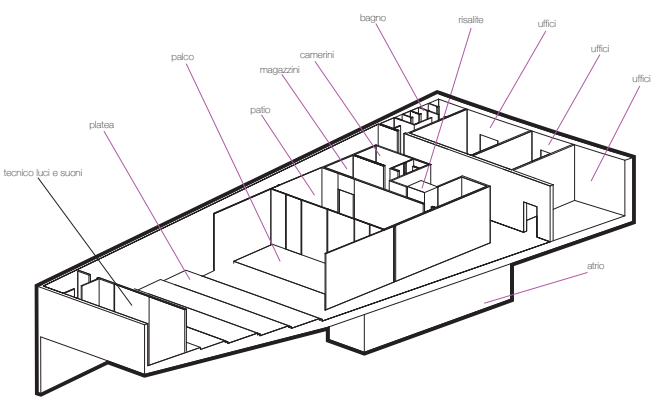
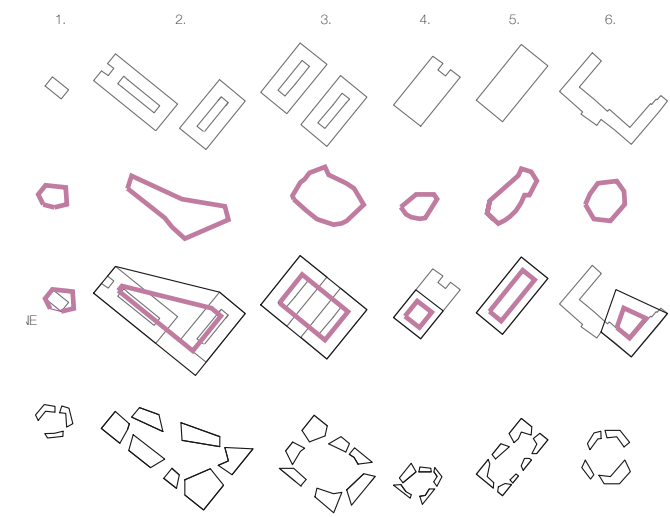




Reserch  
**ETEROTOPIE**

**zero40lab**  
Where: Banne, Trieste  
Function: Forum Event, Auditorium  
Year: 2012  
MQ: 210.000  
Designer: Eugenia Gotti

The research is aimed at reactivating the former military area of banne, abandoned for 20 years. The former barracks will become, given the scale of of the area, a regional center for the performing arts and music. Develops his installation on pre-existing playing between full and empty architecture.



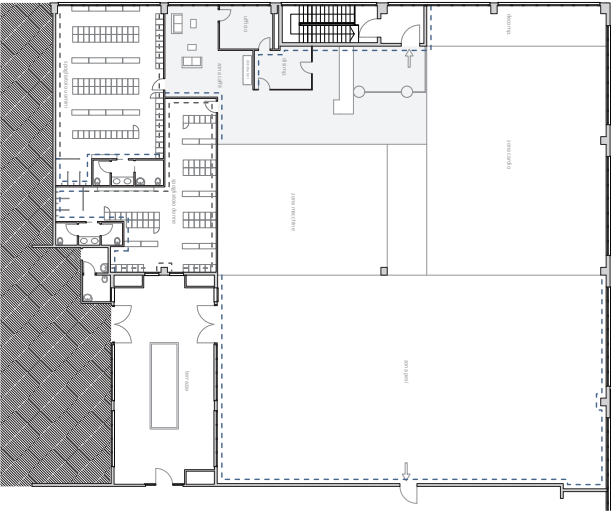


Realized

# WEBFIT PRADAMANO

Zero40lab  
Where: Pradamano  
Function: Gym  
Year: 2012  
MQ: 800 mq  
Designers: Eugenia Gotti, Alessandro Tosatto, Marco Lutman, Enrico Mancini, Lorenzo Pentasuglia

The project is based on a very simple idea but effective:  
characterize the walls of the gym with a Blue brilliant and at the same time very elegant.



- 1. misure: XL  
q.tà: 1  
locale: ingresso  
sfondo: blu 646 U  
colore: bianco
- 2. misure: XL  
q.tà: 1  
locale: ingresso  
sfondo: blu 646 U  
colore: bianco
- 3. misure: XL  
q.tà: 1  
locale: palestra  
sfondo: blu 646 U  
colore: bianco
- 4. misure: XL  
q.tà: 2  
locale: spogliatoio  
sfondo: blu 646 U  
colore: bianco
- 5. misure: XL  
q.tà: 1  
locale: bar  
sfondo: blu 646 U  
colore: bianco
- 6. misure: S,M  
q.tà: 2  
locale: spogliatoio  
sfondo: grigio K50  
colore: bianco
- 7. misure: S,M  
q.tà: 1  
locale: spogliatoio  
sfondo: grigio K50  
colore: bianco
- 8. misure: S,M  
q.tà: 2  
locale: spogliatoio  
sfondo: grigio K50  
colore: bianco
- 9. misure: S, M  
q.tà: 2  
locale: doccia  
sfondo: grigio K50  
colore: bianco
- 10. misure: S, M  
q.tà: 1  
locale: doccia  
sfondo: grigio K50  
colore: bianco

## RECEPTION

## WOMEN

## MEN

## WC

## BAR

## ARMADI

essere ben organizzati equivale a sentirsi bene.

RIPONI SEMPRE TUTTE LE TUE COSE NELL'ARMADIETTO

## ALLENARSI

una postazione pulita sta alla base della qualità del nostro allenamento.

RICORDATI DI PULIRE SEMPRE LA TUA POSIZIONE CON IL DISINFETTANTE DOPO L'USO.

## RIORDINARE

trovare gli oggetti che usi sempre al loro posto ti permette di risparmiare tempo.

RICORDATI DI SISTEMARE I PESI AL LORO POSTO.

## DOCCE

non sprecare l'acqua significa rispettare l'ambiente.

INSERISCI LA MONETA/SELEZIONA LA DOCCIA/ APRI L'ACQUA/CHIUDILA AL TERMINE

## TRASPARENZA

la trasparenza è la base del rispetto reciproco.

QUOTA D'ISCRIZIONE 28,90  
19,90x12= 238,80 € contratto annuale, sospendibile fino a 3 mesi  
PAGOSUBITO contanti-bancomat-carta di credito  
PAGOFACILE addebito automatico mensile su c/c  
PAGOONLINE carta di credito su [www.webfit.it](http://www.webfit.it)

### SPECIFICHE:

**XL**  
font: avert-gothic-DEM1 maiuscolo  
altezza: 70 cm  
materiali: pittura su muro  
direzione: orizzontale

**M**  
font: avanguardia-DEM1 maiuscolo  
altezza: 40 cm  
materiali: stick  
direzione: orizzontale

**S**  
font: avanguardia-DEM1 maiuscolo e minuscolo  
altezza: 7 cm  
materiali: stick  
direzione: orizzontale

### SCHEMA PANNELLATURE:



### QUANTITA':

**XL:**  
intagliare 70 cm  
6 scritte  
24 lettere

**pannello 1**  
misure 65cm x 2,5 cm  
6 pannelli

**pannello 2**  
misure 50 cm x 100 cm  
3 pannelli

**pannello 3**  
misure 30 cm x 150 cm  
7 pannelli

**pannelli scale**  
intagliato 40 cm  
13 lettere  
+12 freccia

+ pannelli vela

### COLORI:

**1.**  
panello GRIGIA  
pannello BLU  
scritta BIANCA

**2.**  
panello BLU  
pannello GRIGIO  
scritta BIANCA

**3.**  
panello BIANCA  
pannello BLU  
scritta BIANCA

**4.**  
scritte intagliate BIANCHE

